

The logo for FORVIS, featuring the word "FORVIS" in a bold, red, sans-serif font. A small "TM" trademark symbol is positioned to the upper right of the letter "S".

**FORVIS**<sup>TM</sup>

The text "Business Technology Solutions" in a white, sans-serif font, set against a background of diagonal red stripes that create a 3D effect.

**Business Technology Solutions**

# **Financial Reports in Solver & Power BI: Which Is Best?**

August 22, 2023

# TO RECEIVE CPE CREDIT

- **You must respond to at least 3 of the 4 polling questions per CPE hour**
- **You must be logged in for a minimum of 50 minutes per every CPE hour in order to receive CPE credit**

# About FORVIS

## Services

- Assurance
- Tax
- Consulting

**FORVIS** ranks among the nation's top 10 public accounting firms, helping unlock the potential of our clients, people, and communities. We deliver an **Unmatched Client Experience**<sup>®</sup> with assurance, tax, and consulting services that reflect our exceptional capabilities and uncommon commitment to excellence. Discover how our forward vision can help you prepare for what's next.



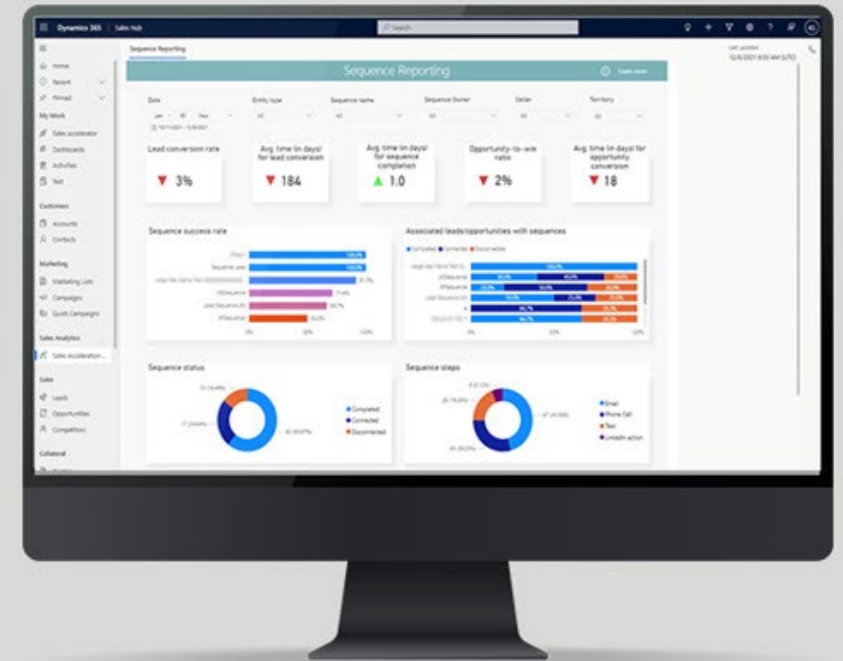
**FORVIS**

# Business Technology Solutions

FORVIS' Business Technology Solutions can help support digital transformation across your organization with enterprise resource planning (ERP) and customer relationship management (CRM) platform analysis, design, implementation, upgrade, training, and support services.

In addition, our Insights & Automation services include business intelligence (BI) and robotic process automation (RPA) assessments, implementations, and training.

**FORVIS**



From sales forecasting to financial reporting, learn what CRM and ERP technologies can do.

# Meet the Presenter



**Charles Allen**

FORVIS Senior Managing Consultant

713.499.4629

[charles.allen@forvis.com](mailto:charles.allen@forvis.com)

**FORVIS**

# Objectives

- Discuss the differences between Solver & Power BI
- Explain how a financial report can be created using a Matrix report in Power BI
- Describe how a financial report can be created using Report Builder in Power BI

# Agenda

9:00 a.m. CT



Introduction

---

9:10 a.m.



Solver Reporting

---

9:30 a.m.



Power BI Using Matrix Visual

---

9:40 a.m.



Power BI Using Paginated Reports



# Introduction

---

**FORV/S**

FORVIS is a trademark of FORVIS, LLP, registration of which is pending with the U.S. Patent and Trademark Office.



# What's Your Purpose?

- Who's using the reports?
- How are you presenting the data?
- How are you delivering the reports?
- Who's creating the reports?
- What type of maintenance is required?



# Solver Reporting

---

**FORV/S**

FORVIS is a trademark of FORVIS, LLP, registration of which is pending with the U.S. Patent and Trademark Office.

# What Is Solver?



CLOUD-BASED CPM  
SOLUTION



INCLUDES  
REPORTING &  
PLANNING



AZURE SQL-BASED  
DATA WAREHOUSE



EXCEL REPORT  
DESIGN  
EXPERIENCED

**FORV/S**

# Financial Report in Solver

- Excel-driven report design
- Groups
- Filters
- Dimension
- Parameters
- Drill Down

Account Descriptions	July, 2021						Year-To-Date						
	Actual	Prior Year	Variance	Var %	Budget	Variance	Actual	Prior Year	Variance	Var %	Budget	Variance	Variance
<b>Revenue</b>													
40010 Product Revenue	2,007,834	1,914,258	93,576	4.9%	1,961,784	46,050	12,154,206	11,460,463	693,743	6.1%	10,732,678	1,421,528	13.2%
40020 Services Revenue	1,003,328	1,058,622	(55,294)	-5.2%	1,216,519	(213,191)	6,286,766	6,162,600	124,166	2.0%	7,523,738	(1,236,972)	-16.4%
40030 Maintenance Revenue	191,644	193,761	(2,117)	-1.1%	193,617	(1,973)	1,207,609	1,150,568	57,041	5.0%	1,058,772	148,837	14.1%
40040 Other Revenue	99,381	92,629	6,752	7.3%	94,238	5,143	591,793	584,103	7,691	1.3%	519,335	72,458	14.0%
<b>Total Revenue</b>	<b>3,302,187</b>	<b>3,259,270</b>	<b>42,917</b>	<b>1.3%</b>	<b>3,466,158</b>	<b>(163,971)</b>	<b>20,240,375</b>	<b>19,357,734</b>	<b>882,640</b>	<b>4.6%</b>	<b>19,834,523</b>	<b>405,852</b>	<b>2.0%</b>
<b>Cost of Goods Sold</b>													
50010 COGS - Product Sales	662,744	624,349	(38,395)	-6.1%	687,100	24,356	4,061,328	3,965,940	(95,388)	-2.4%	4,261,990	200,662	4.7%
<b>Cost of Goods Sold</b>	<b>662,744</b>	<b>624,349</b>	<b>(38,395)</b>	<b>-6.1%</b>	<b>687,100</b>	<b>24,356</b>	<b>4,061,328</b>	<b>3,965,940</b>	<b>(95,388)</b>	<b>-2.4%</b>	<b>4,261,990</b>	<b>200,662</b>	<b>4.7%</b>
<b>Profit Margin</b>	<b>2,639,443</b>	<b>2,634,921</b>	<b>4,522</b>	<b>0.2%</b>	<b>2,779,058</b>	<b>(139,615)</b>	<b>16,179,047</b>	<b>15,391,794</b>	<b>787,252</b>	<b>5.1%</b>	<b>15,572,533</b>	<b>606,514</b>	<b>3.9%</b>
<b>Profit Margin %</b>	<b>79.9%</b>	<b>80.8%</b>	<b>-0.9%</b>	<b>-1.1%</b>	<b>80.2%</b>	<b>-0.2%</b>	<b>79.9%</b>	<b>79.5%</b>	<b>0.4%</b>	<b>0.5%</b>	<b>78.5%</b>	<b>1.4%</b>	<b>1.8%</b>
<b>Departmental Expenses</b>													
60010 Full Time - Salary	558,370	573,267	14,898	2.6%	461,680	(96,689)	3,496,465	3,475,551	(20,914)	-0.6%	2,822,608	(673,856)	-23.9%
60020 Full Time - Commission	42,988	43,519	531	1.2%	44,084	1,096	263,674	257,254	(6,420)	-2.5%	262,646	(1,028)	-0.4%
60030 Full Time - Bonus	139,257	141,549	2,292	1.6%	144,402	5,145	875,088	865,206	(9,881)	-1.1%	880,171	5,083	0.6%
61010 Part Time - Salary	57,335	56,310	(1,024)	-1.8%	58,961	1,626	354,353	346,869	(7,484)	-2.1%	348,714	(5,639)	-1.6%
61040 Part Time - Overtime	14,802	14,023	(779)	-5.6%	14,617	(185)	88,577	86,163	(2,414)	-2.8%	88,288	(289)	-0.3%
61050 Part Time - Bonus	21,725	21,810	85	0.4%	20,998	(727)	132,640	129,611	(3,028)	-2.3%	131,729	(911)	-0.7%
61500 Payroll Taxes - FICA	97,294	99,953	2,659	2.7%	100,815	3,521	616,711	599,214	(17,498)	-2.9%	610,262	(6,449)	-1.1%
61510 Payroll Taxes - FUTA	14,025	14,202	177	1.2%	13,965	(60)	88,341	85,451	(2,890)	-3.4%	86,016	(2,325)	-2.7%
61520 Payroll Taxes - SUTA	14,324	14,226	(98)	-0.7%	14,003	(321)	87,963	86,647	(1,317)	-1.5%	87,465	(498)	-0.6%
61530 Payroll Taxes - Workers Compensation	14,158	14,056	(101)	-0.7%	14,476	318	87,446	86,703	(743)	-0.9%	86,352	(1,094)	-1.3%
61540 Benefits	2,876	2,795	(81)	-2.9%	2,881	5	17,800	17,264	(536)	-3.1%	17,592	(208)	-1.2%
<b>Salaries and Benefits</b>	<b>977,153</b>	<b>995,710</b>	<b>18,557</b>	<b>1.9%</b>	<b>890,882</b>	<b>(86,271)</b>	<b>6,109,057</b>	<b>6,035,931</b>	<b>(73,127)</b>	<b>-1.2%</b>	<b>5,421,843</b>	<b>(687,214)</b>	<b>-12.7%</b>
62010 Marketing	1,146,435	1,158,719	12,284	1.1%	1,193,946	47,511	7,044,854	6,911,483	(133,370)	-1.9%	7,013,583	(31,271)	-0.4%
62020 Conference and seminars	9,958	9,744	(214)	-2.2%	9,798	(160)	61,766	60,394	(1,372)	-2.3%	61,250	(516)	-0.8%
62030 Advertising	3,470	3,512	42	1.2%	3,486	16	21,234	21,015	(219)	-1.0%	21,408	174	0.8%
62040 Gift and donations	347	351	3	1.0%	345	(2)	2,125	2,091	(34)	-1.6%	2,105	(20)	-0.9%
<b>Sales and Marketing</b>	<b>1,160,211</b>	<b>1,172,326</b>	<b>12,115</b>	<b>1.0%</b>	<b>1,207,575</b>	<b>47,364</b>	<b>7,129,978</b>	<b>6,994,983</b>	<b>(134,995)</b>	<b>-1.9%</b>	<b>7,098,346</b>	<b>(31,632)</b>	<b>-0.4%</b>
63010 Travel	6,254	6,217	(38)	-0.6%	6,386	132	88,572	37,601	(50,970)	-135.6%	38,667	(49,905)	-129.1%
63020 Special events	1,186	1,184	(2)	-0.1%	1,250	64	7,282	7,186	(96)	-1.3%	7,330	48	0.7%
<b>Travel and Entertainment</b>	<b>7,440</b>	<b>7,401</b>	<b>(39)</b>	<b>-0.5%</b>	<b>7,636</b>	<b>196</b>	<b>95,854</b>	<b>44,787</b>	<b>(51,066)</b>	<b>-114.0%</b>	<b>45,997</b>	<b>(49,857)</b>	<b>-108.4%</b>
64010 Consulting	24,388	24,211	(178)	-0.7%	24,721	333	150,908	148,612	(2,296)	-1.5%	149,994	(914)	-0.6%
64020 Audit and Accounting	4,559	4,513	(45)	-1.0%	4,636	77	28,067	27,414	(653)	-2.4%	27,512	(555)	-2.0%
64030 Legal	21,448	22,223	775	3.5%	22,539	1,091	133,230	131,676	(1,554)	-1.2%	132,806	(424)	-0.3%
64040 Contractual Services	3,763	3,766	3	0.1%	3,739	(24)	22,920	22,525	(395)	-1.8%	22,654	(266)	-1.2%
64050 Trainine	273	263	(9)	-3.5%	268	(5)	1,637	1,631	(6)	-0.4%	1,636	(1)	0.0%

# Report Design in Solver

## Excel

- Formulas
- Formatting
- Form

## Solver

- Data
- Filters

The screenshot displays the Microsoft Excel Solver Reporting interface. The main window shows a 'P&L Combo Report with KPI Analysis' for 'Entity Description'. The report is designed with a clean, professional layout, featuring two bar charts at the top: 'Net Income Margin YTD' and 'Product Revenue (% of Total Income)'. Below the charts is a detailed table with columns for 'Account Descriptions', 'Actual', 'Prior Year', and 'Variance'. The table includes rows for 'Revenue', 'Cost of Goods Sold', 'Profit Margin', and 'Departmental Expenses'. A 'Layout Editor' window is open, allowing the user to customize the report's appearance, including font styles, colors, and filters. The interface also shows the 'Report Designer' sidebar on the left, which provides navigation options for different report components like 'General Ledger', 'Accounts Payable', and 'Accounts Receivable'.

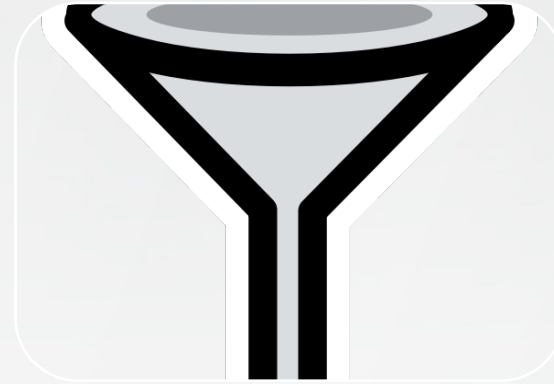
# Report Design Ingredients



Excel



Solver add-in



Row, Column,  
& Sheet filters



Groups



**Show Me!**

---





# Power BI Using Matrix Visual

---

**FORV/S**

FORVIS is a trademark of FORVIS, LLP, registration of which is pending with the U.S. Patent and Trademark Office.



# Power BI Benefits

- Extremely popular
- Software is usually low-cost
- Interactive
- Visual

# Reports in Power BI

- Multiple ways
- Formatting needed
- Data source
- Measures, measures, measures
- Matrix visualization

# Hard-Coded but Easy

- Create measures
- Drag each measure to the value
- Switch columns to rows

# More Flexible

- Template for layout
- Measures for line items
- Utilize Switch expression



**Show Me!**

---



The background features a stylized globe with a network of golden lines connecting various points across the continents, symbolizing global connectivity and data flow. A red decorative shape is visible in the top-left corner.

# Power BI Using Paginated Reports

---

**FORV/S**

FORVIS is a trademark of FORVIS, LLP, registration of which is pending with the U.S. Patent and Trademark Office.

# Paginated Reports

- Use Report Builder for Power BI
- Connect to Different Data Sources
- Use Expressions
- Print or Export



**Show Me!**

---





# What's Next?

<u>Why &amp; How to Extract Data from PDF with Power Automate</u>	Tuesday, September 5	2:00 to 3:00 p.m. ET
<u>Streamline Budgeting &amp; Reporting Processes in Higher Education</u>	Tuesday, September 12	10:00 to 11:00 a.m. ET
<u>What Is Power BI?</u>	Thursday, September 21	10:00 to 11:00 a.m. ET

# Q&A



Use the Q&A tool to submit any questions you may have

**FORV/S**

# CONTINUING PROFESSIONAL EDUCATION (CPE) CREDIT



**FORVIS, LLP** is registered with the National Association of State Boards of Accountancy (NASBA) as a sponsor of continuing professional education on the National Registry of CPE Sponsors. State boards of accountancy have final authority on the acceptance of individual courses for CPE credit. Complaints regarding registered sponsors may be submitted to the National Registry of CPE Sponsors through its website: [www.nasbaregistry.org](http://www.nasbaregistry.org)

**FORV/S**

# CPE Credit

- CPE credit may be awarded upon verification of participant attendance
- For questions, concerns, or comments regarding CPE credit, please email FORVIS at [cpecompliance@forvis.com](mailto:cpecompliance@forvis.com)

# Thank you!

**forvis.com**

The information set forth in this presentation contains the analysis and conclusions of the author(s) based upon his/her/their research and analysis of industry information and legal authorities. Such analysis and conclusions should not be deemed opinions or conclusions by FORVIS or the author(s) as to any individual situation as situations are fact specific. The reader should perform its own analysis and form its own conclusions regarding any specific situation. Further, the author(s) conclusions may be revised without notice with or without changes in industry information and legal authorities. FORVIS has been registered in the U.S. Patent and Trademark Office, which registration is pending.

# **FORVIS**

**Assurance / Tax / Advisory**